



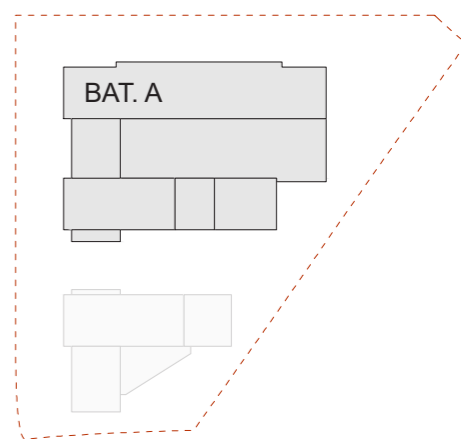
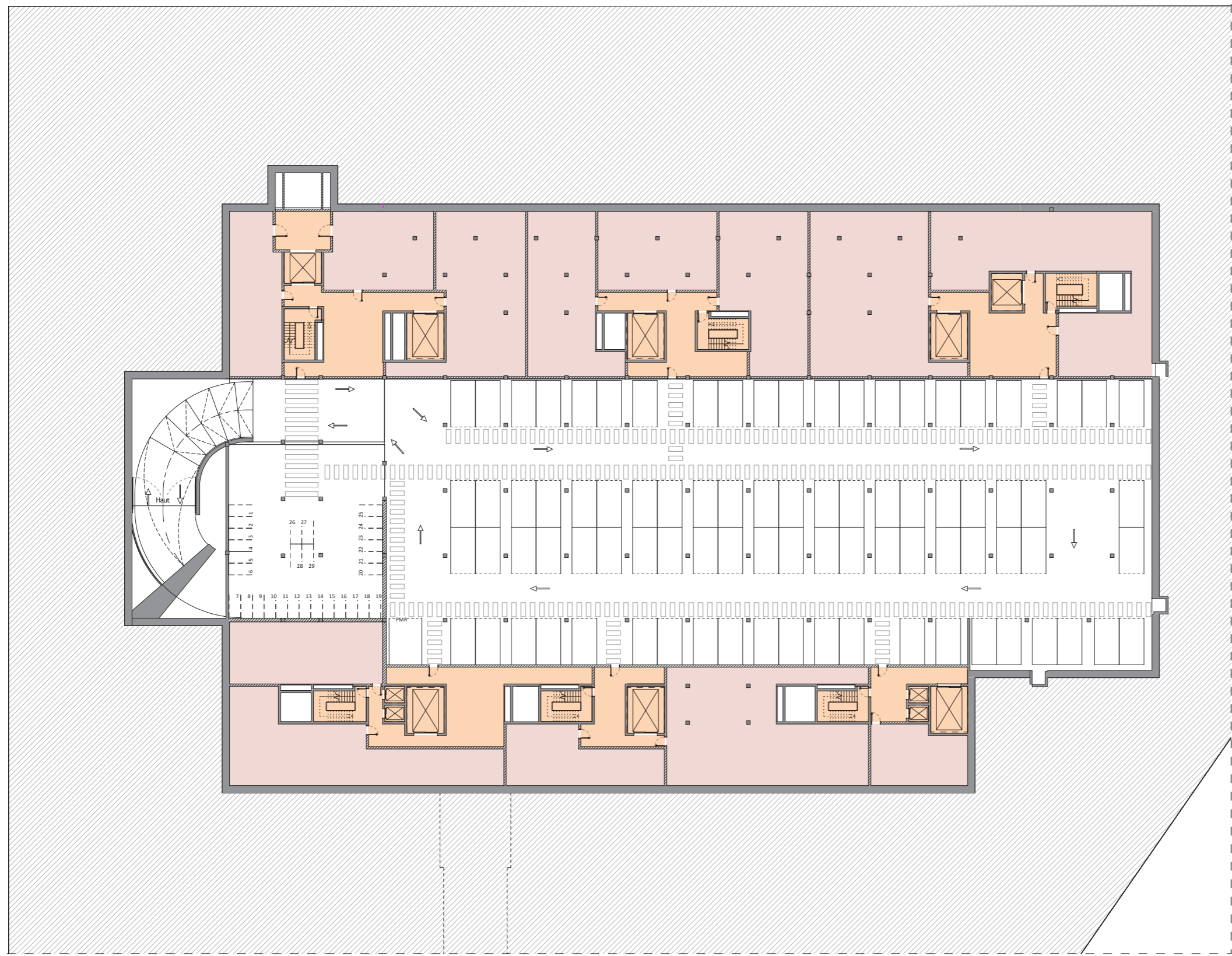
Affectation

-  Accès / Dégagement
-  Locaux techniques

Parking • Sous-sol -2 • Complexe A

- Voitures 85 places
- Motos 29 places

TOTAL Sous-sol -2	SNP	SBP
Complexe A	5'728.40 m ²	6'494.70 m ²



Images et surfaces non contractuelles

