



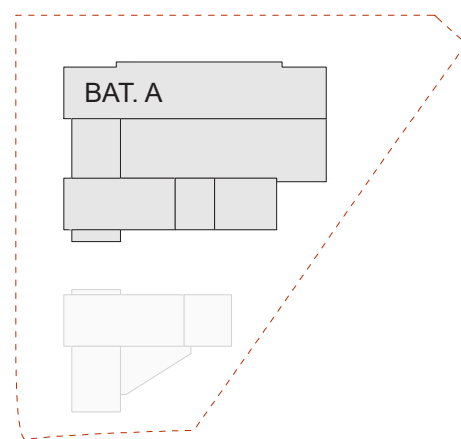
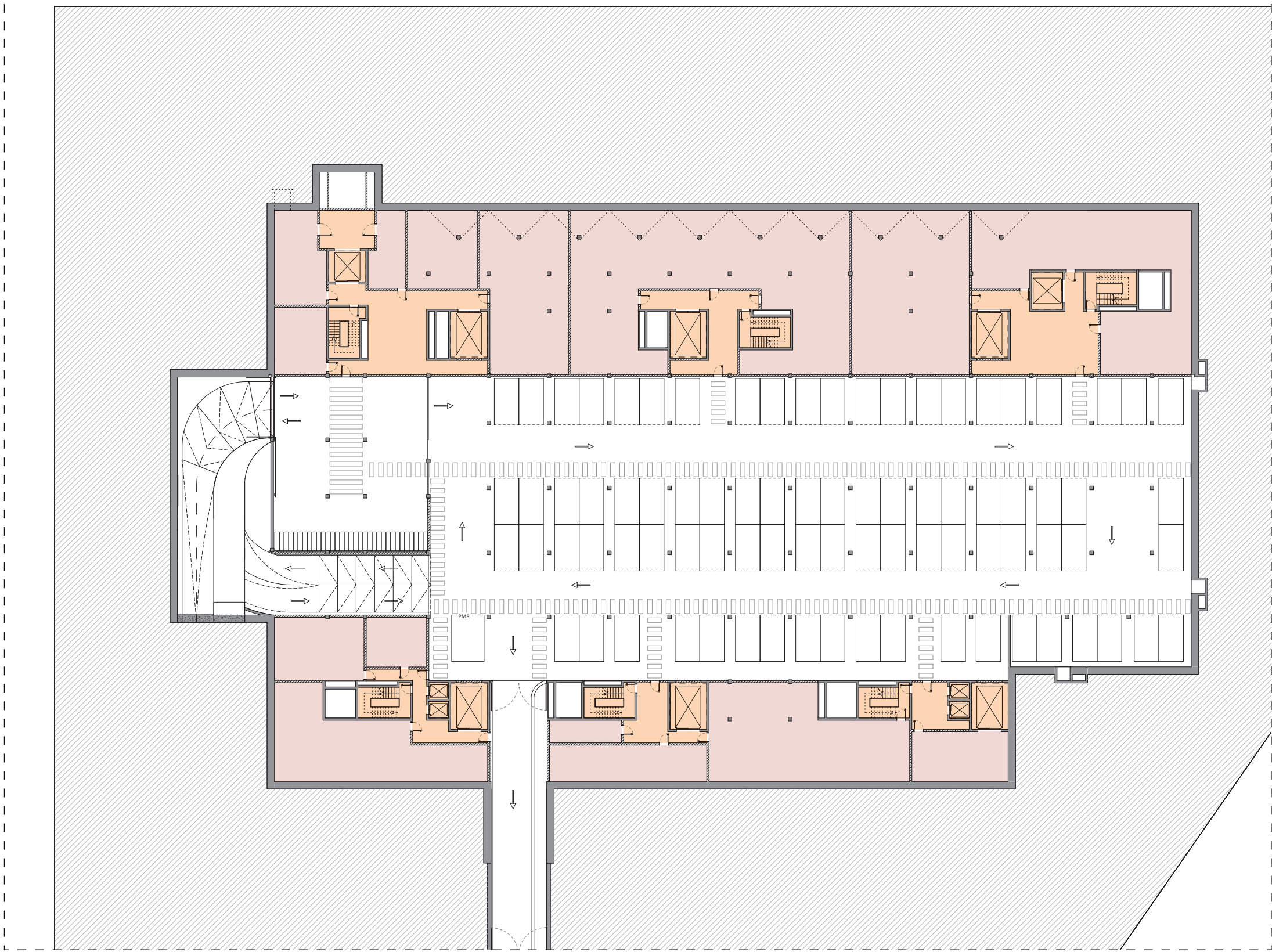
Affectation

-  Accès / Dégagement
-  Locaux techniques

Parking • Sous-sol -1 • Complexe A

- Voitures 83 places
- Vélos 33 places

TOTAL Sous-sol -1	SNP	SBP
Complexe A	5'766.30 m ²	6'499.40 m ²



Images et surfaces non contractuelles